

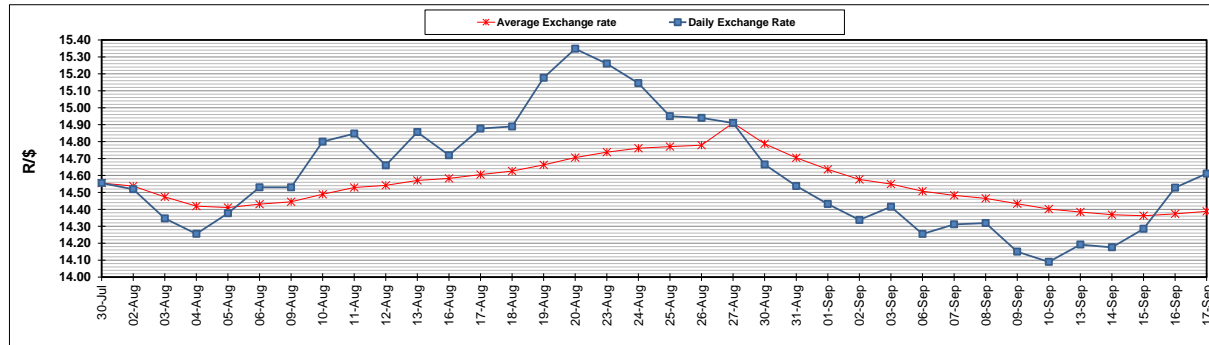
	PETROL 95 ULP	PETROL 93 ULP & LRP	DIESEL 0.05%	DIESEL 0.005%	ILL. PAR.
GAUTENG PUMP PRICE (SA c/l) AS FROM 01/09/2021	1,834.000	1,815.000	-	-	-
WHOLESALE PRICE (SA c/l) AS FROM 01/09/2021	-	-	1,548.980	1,552.380	948.488
SINGLE NATIONAL MAXIMUM RETAIL PRICE	-	-	-	-	1,197.000
BASIC FUEL PRICE - 17/09/2021 (SA c/l)	819.117	808.306	785.130	788.841	778.171
PRESS RELEASE CONTRIBUTION TO BFP 01/09/2021 - 17/09/2021 (SA c/l)	817.110	808.110	746.630	750.030	735.128
UNIT OVER/(UNDER) RECOVERY - 17/09/2021 (SA c/l)	(2.007)	(0.196)	(38.500)	(38.811)	(43.043)
AVERAGE BASIC FUEL PRICE 27/08/2021 - 17/09/2021	802.584	790.682	745.279	748.528	739.357
AVERAGE UNIT OVER/(UNDER) RECOVERY 27/08/2021 - 17/09/2021	16.491	19.393	5.851	5.815	(1.416)

### ANALYSIS MOVEMENT OF AVERAGE OVER/(UNDER) RECOVERY

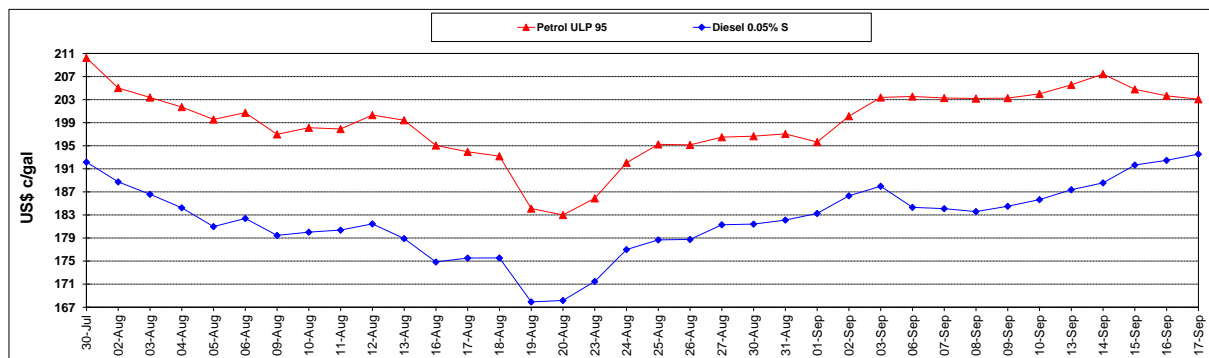
	PETROL 95	PETROL 93	DIESEL 0.05%	DIESEL 0.005%	ILL. PAR.
- MOVEMENT IN INTERNATIONAL PRODUCT PRICES	(5.302)	(2.077)	(14.386)	(14.510)	(21.492)
- MOVEMENT IN EXCHANGE RATE	21.793	21.470	20.237	20.325	20.076
AVERAGE UNIT OVER/(UNDER) RECOVERY 27/08/2021 - 17/09/2021	16.491	19.393	5.851	5.815	(1.416)

### R/\$ EXCHANGE RATE - (R/\$14.6110 - 17/09/2021)

### EXCHANGE RATE USED IN BASIC FUEL PRICE



### INTERNATIONAL PRODUCT PRICES OF BASKET USED IN BASIC FUEL PRICE



### BASIC FUEL PRICE IN SA CENTS PER LITRE

